

From: [Jones, Charlotte](#)
To: [Thurrock FPG](#)
Cc: [Elsenaar, Marnix](#)
Subject: RE: Thurrock Flexible Generation Plant Project - Deadline 2 - Network Rail Infrastructure Limited [ADDGDD-Live.FID2953643]
Date: 23 March 2021 18:02:29
Attachments: [Tilbury LCs.PDF](#)
[Site inspection itinerary.pdf](#)

Dear Sir or Madam

Planning Inspectorate Reference: EN010092

Interested Party Reference: 20025538

Further to my previous email, please see below a simple itinerary in relation to Network Rail's requested site inspections along with a plan of the relevant level crossings.

I would be grateful if you could please confirm receipt.

Kind regards

Charlotte

Charlotte Jones

Associate

Addleshaw Goddard LLP

Tel +44 (0)113 209 2655

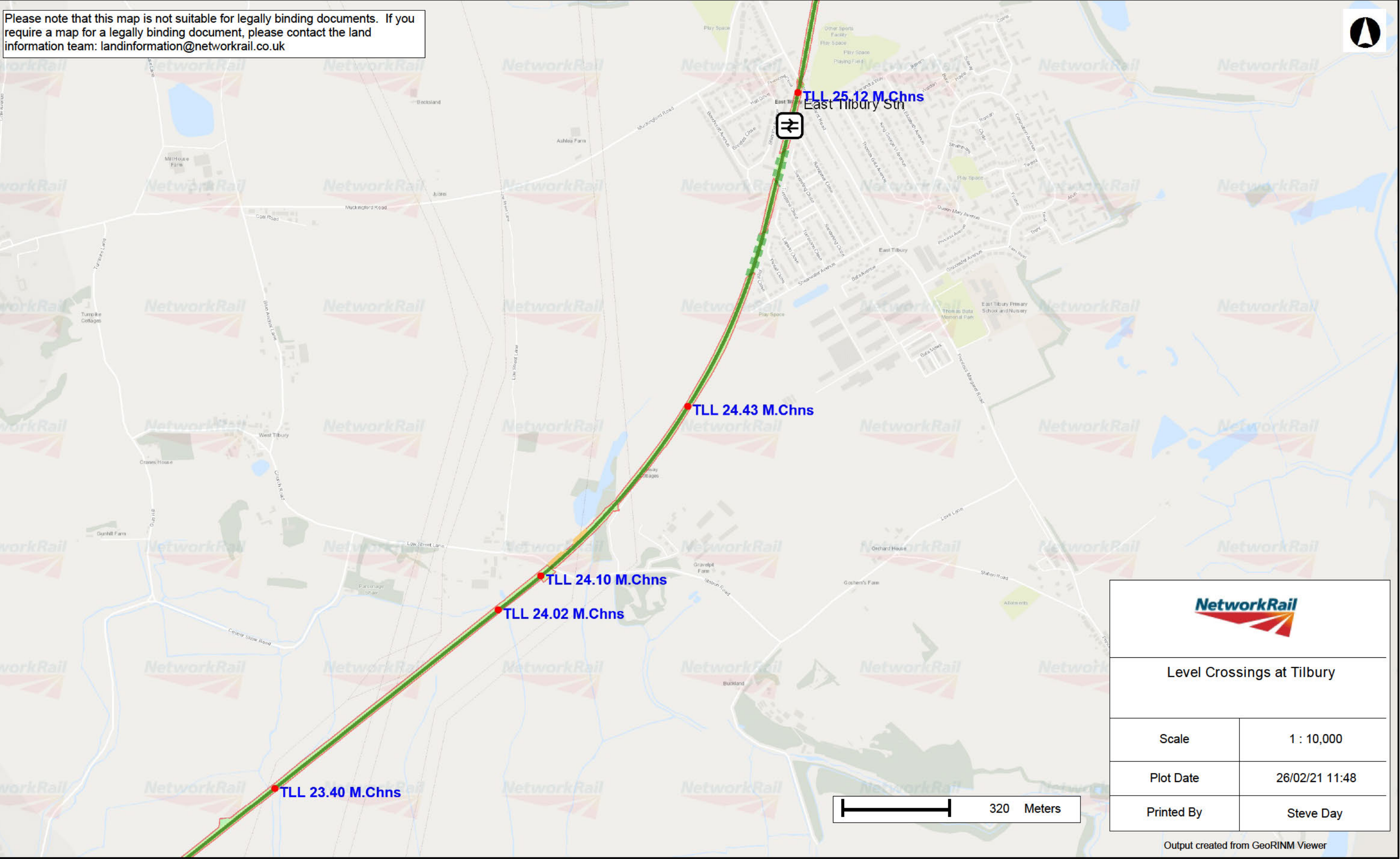
Mob +44 ([REDACTED])

[View our office locations](#)

Network Rail Infrastructure Limited – Site inspection itinerary

Location	Plan reference	Description	Comments	Time required
East Tilbury Level Crossing	TLL 25.12M.Chns	Public highway CCTV controlled barriers level crossing located on Princess Margaret Avenue, East Tilbury	Review of current levels of traffic	45 minutes (plus 15 minute drive between sites)
Low Street Level Crossing	TLL 24.10M.Chns	Public highway CCTV controlled barriers level crossing located on Station Road, East Tilbury	Review of current levels of traffic over level crossing and approach roads NB Depending on the number of visitors, a road closure of highways safe system of work may be required due to confined space and high number of HGVs on blind bend	1 hour (plus 15 minute drive between sites)
No. 168 Level Crossing	TLL 24.02M.Chns	Private level crossing located west of Station Road, East Tilbury	Review of current use of level crossing and issues of traffic on the approaches	30 minutes
Walton Common Level Crossing	TLL 23.40M.Chns	Private level crossing located west of Station Road, East Tilbury	Review of current fencing and gates and trespass issues	30 minutes

Please note that this map is not suitable for legally binding documents. If you require a map for a legally binding document, please contact the land information team: landinformation@networkrail.co.uk



Level Crossings at Tilbury

Scale	1 : 10,000
Plot Date	26/02/21 11:48
Printed By	Steve Day

Output created from GeoRINM Viewer